



PETERMAN
- LUMBER INC. -



13 Hour Water Resistant TEXTURED WOODGRAINS

Saviola is our premier wood texture made with a 13-hour resistant hydrocore. Italian thermal structured veneers (TSV) offer the elegance of high end European design trends with the benefits of being environmentally produced with 100% Post Consumer Recycled materials.

	CAYMAN GSDP8	PANNA GS98R	CANYON BLEACH GSD23	ROVERE SABBIA GSP01	FANTASIA GS40R	
BIANCO GS68R	EUCALIPTO WHITE GSDB1	LAKESHORE OAK GSDF4	CANYON OAK GSD17	CORAL SAND GSP42	MARANELLO GS61M	crossgrain RIALTO HEMLOCK GSDS8
KEY WEST GSDM6	RUSTIC OAK GSDF5	RUSTICA GSDF3	WILD WOOD GSP50	PALISANDRO GRIGIO GSDF9	ROVERE AGENTO GSDH1	MAHNOLIA LINEN GSDE6
PECAN GOLD GSDS6	PALISANDRO WALNUT GSDF6	CORAL BARK GSP46	FUMO GSP32	PECAN SCURO GSDS7	PECAN ROAST GSDR3	BUFF LINEN GS20M
	NOCE RIBERA GSDF2	CANYON WALNUT GSD18	also in gloss ROVERE GRIGIO GSDH2	EUCALIPTO BROWN GSDB3	MOCA GSP20	ANTHRACITE LINEN GSX7R
also in gloss EUCALIPTO GREY GSDB2	also in gloss PALISANDRO AZURO GSDF8	also in gloss CANYON CHARCOAL GSTM2	also in gloss UVA GSP25	also in gloss CARBONE GSDH3	LAVA GSDU6	TIGER EYE GSDS2

COORDINATED MATERIALS



BOARD

- SHEET SIZE:
83-5/16" x 110-1/4"
- THICKNESS:
8MM (5/16")
19MM (3/4")
- CARB2, 13 Hour Water Resistant Core
- Double sided woodgrain texture



HPL/SKIN

- SHEET SIZE:
60" x 120"
- THICKNESS:
.7MM (1/32")



EDGEBANDING

- 328' roll
- THICKNESS:
1MM
- WIDTH:
23MM, 43MM, 65MM
- BANDING: ABS



DOORS

AVAILABLE IN 3 STYLES



5PC



3PC



SLAB

Completely custom door and drawer solutions.

13 Hour Water Resistant ECOLOGICAL PANELS

Every year, wood amounting to about **6 MILLION TONS** ends up in landfills or is burned.

If we consider that wood was used only once before being abandoned in landfills or burned, and that the needs of man, in constant growth, are difficult to meet with the natural cycles without serious imbalances for the environment, then the re-use of a resource in a repeatable manner becomes a crucial factor for sustainable development.

10,000 TREES SAVED EVERY DAY



Saviola's production process for the construction of the Ecological Panel allows 10,000 trees to be saved everyday. The wood collection takes place through its recovery from industrial and commercial companies, municipalities, utility companies, and public bodies. Ecological Panel is the best possible choice, because it creates an infinite cycle of wood. It is the first and only board to be 100% post-consumer recycled wood. Saviola, The Eco-Ethical Company, through

eco-sustainability and the ethics of recycling, is the leading processor of post-consumer wood in the world, with 1.5 million tons processed every year. The production philosophy is based on the recovery and reuse of a raw material that can be reborn and reused without the need to cut down new trees, through an economically and ecologically sustainable process.

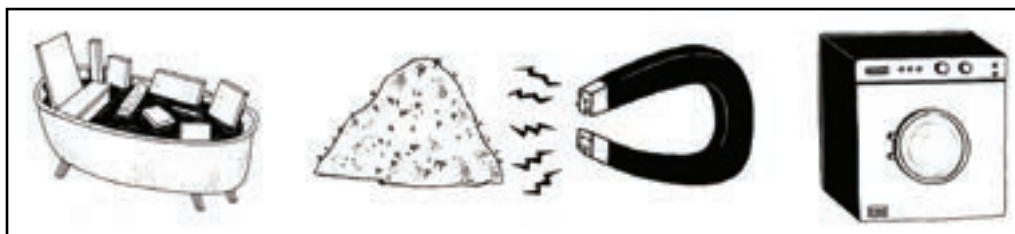
100% POST-CONSUMER RECYCLED



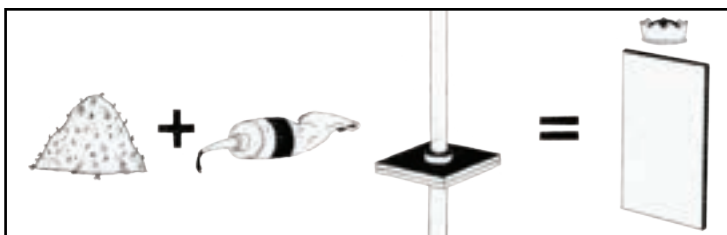
The Recycling Wood is a Rational and Important Choice:

1. It contributes to the preservation of forests.
2. It reduces the volumes going into landfills.
3. It generates less environmental impact.
4. It reduces greenhouse gas emissions.

NON-CHEMICAL SEPARATION



RESIN FUSED CORE THAT REPELS WATER



SCAN TO VIEW SAVIOLA'S
POST-CONSUMER RECYCLED
PROCESS VIDEO



**CONTACT US TODAY ABOUT
THIS AND OUR OTHER
ECO-FRIENDLY PRODUCTS**

CALIFORNIA

10330 ELM AVE.
FONTANA, CA 92337

P: 909-357-7730

ARIZONA

4110 W. WASHINGTON ST.
SUITE 200
PHOENIX, AZ 85009

P: 623-936-2627

NEVADA

5625 ARVILLE STREET,
SUITE C-D
LAS VEGAS, NV 89118

P: 702-430-3433